



CB

Medium-pressure centrifugal fans (anticorrosive)

Construction characteristics

- Reinforced sheet steel housing.
- Galvanized sheet steel turbine. Max. airflow temperature: 120° C.
- Asynchronous motors, with squirrel-cage rotor.
Standard models supplied with three-phase 230/400 V, 50 Hz and single-phase 230V, 50 Hz.
Class F insulation and IP-55 protection.
(IP-54 models 1428-4M and 1733-6M)
- Corrosion-proof finish in polyester resin, polymerised at 180°C, after degreasing, phosphating and passivation pre-treatment.

Technical characteristics

Model	Velocity (r/min)	Max. admissible current (A)		Installed power (kW)	Max. airflow (m ³ /h)	Sound level pressure dB(A)	Approx. weight Kg.
		230V	400V				
CB-820-4T	1410	1,32	0,76	0,25	2100	64	12,20
CB-820-4M	1410	2,00	-	0,25	2100	64	12,20
CB-1428-4T	1380	3,22	1,86	0,75	2800	69	17,60
CB-1428-4M	1300	4,00	-	0,75	2800	69	17,60
CB-1428-6T	950	1,47	0,85	0,25	2000	65	16,20
CB-1428-6M	940	1,70	-	0,25	2000	65	16,20
CB-1733-4T-1,5	1350	4,59	2,65	1,10	3200	74	25,00
CB-1733-4T-2	1400	5,98	3,45	1,50	4000	75	25,00
CB-1733-6T	900	3,39	1,95	0,75	3400	68	23,20
CB-1733-6M	900	5,50	-	0,75	3400	68	23,20
CB-2240-6T	920	9,32	5,36	2,20	7000	74	68,00



Orientation

Standard LG 270 supply



Acoustic characteristics

The values shown are calculated using free-field sound pressure levels in dB (A), at a distance equivalent to twice the fan span plus the impeller diameter, with a minimum of 1.5 m.

Sound power spectrum Lw(A) in dB(A) by frequency band in Hz.

Model	63	125	250	500	1000	2000	4000	8000	Model	63	125	250	500	1000	2000	4000	8000
820	39	49	60	67	71	68	66	59	1733-4-2	50	60	71	78	82	79	77	70
1428-4	44	54	65	72	76	73	71	64	1733-6	43	53	64	71	75	72	70	63
1428-6	40	50	61	68	72	69	67	60	2240	52	61	72	79	83	81	79	72
1733-4-1,5	49	59	70	77	81	78	76	69									

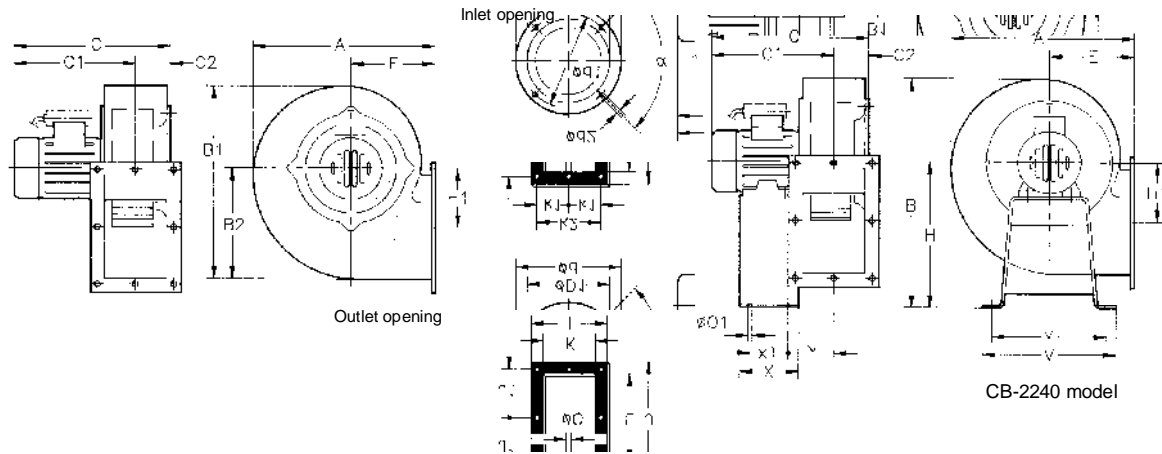


CB

Dimensions mm

	A	B1	B2	C	C1	C2	ØD1*	Ød	Ød1	Ød2	E	H1	I	J	J1	K	k1	k2	L	ØO	α
CB-820	321	374	222	339	268	71	200	247	230	M6	138	135.5	184	213	94.5	130	-	160	160	9	4x90°
CB-1428	423	442	247	440	340	100	224	-	294	M6	202	103	260	350	160	198	115	230	286	9	6x60°
CB-1733	490	520	290	520	398	122	315	-	355	M6	230	118	316	415	186	242	140	280	339	9	6x60°

* Recommended nominal tube diameter

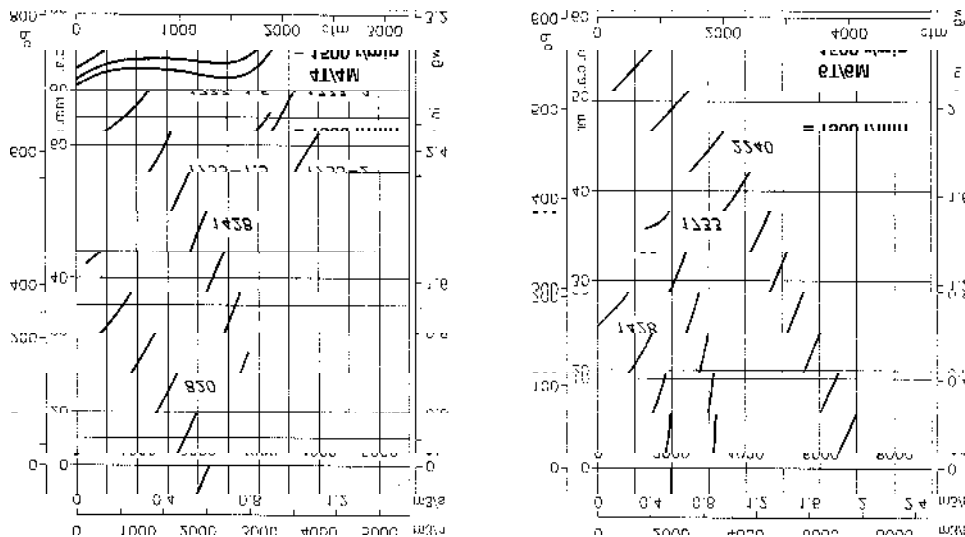


	A	B	C	C1	C2	ØD1*	Ød1	Ød2	E	H	H1	I	J	J1	K	k1	k2	L	ØO	ØO1	V	v	X	x1	Y	α
CB-2240	578	674	610	475	135	355	410	M6	265	402	147	340	478	218	268	151	302	402	9	13	400	365	240	180	166.5	8x45°

* Recommended nominal tube diameter

Characteristics Curves

Q = Airflow in m³/h. and m³/s.
Pe = Static pressure in mm.c.a. and Pa.



Accessories

See pages 248 onwards.

