



CBD

**Closed motor
class F insulation**

CBD CBD3V

Low pressure centrifugal fans with direct drive motor

Construction characteristics

- Galvanized steel housing and turbine.
- Closed motors with thermal protector incorporated in the winding.
Single-phase 220-240V. 50 Hz. IP-54 protection.
Three-phase 220-240/380-415 V. 50 Hz. IP-22 protection.
Class F insulation.
- (PSB) support bases available on request.

Technical characteristics

Model	Velocity (r/min)	Inches Equivalence	Max. admissible current (A)		Installed power (kW)	Max. airflow (m3/h)	Sound level pressure dB(A)	Approx. weight Kg.
			220/240V	380/415V				
CBD-1919-4M 1/5	1230	7/7	1,35	-	0,15	1310	63	7,5
CBD-1919-6M 1/10	900	7/7	0,90	-	0,07	1400	53	7,3
CBD-2525-4M 1/2	1380	9/9	4,00	-	0,37	3000	68	14,8
CBD-2525-4M 3/4	1250	9/9	4,00	-	0,55	3350	72	15,0
CBD-2525-6M 1/5	860	9/9	1,60	-	0,15	2600	62	14,5
CBD-2525-6M 1/3	850	9/9	2,00	-	0,25	2650	64	14,7
CBD-2828-4M 1/2	1380	10/10	3,90	-	0,37	2600	69	15,8
CBD-2828-4M 3/4	1250	10/10	4,20	-	0,55	3350	74	16,5
CBD-2828-6M 1/3	850	10/10	2,00	-	0,25	3100	64	15,5
CBD-3333-6T 1 1/2	900	12/12	6,95	4,00	1,10	7800	71	26,0
CBD-3333-6M 3/4	850	12/12	4,40	-	0,55	5000	69	25,0
CBD-3333-6M 1	925	12/12	6,20	-	0,75	5800	71	25,5
CBD-3939-6T 3	940	15/15	9,18	5,30	2,20	11000	74	41,0

CBD CBD3V



CBD3V

Centrifugal low pressure fans with direct drive motor and 3 speeds

Construction characteristics

- Galvanized steel housing and turbine.
- Closed 3 speed motors, with thermal protector incorporated in the winding.
Single-phase 220-240V 50Hz. IP-54 Protection. Class F insulation.
- On request they can be supplied with PSB foot stand.

NEW

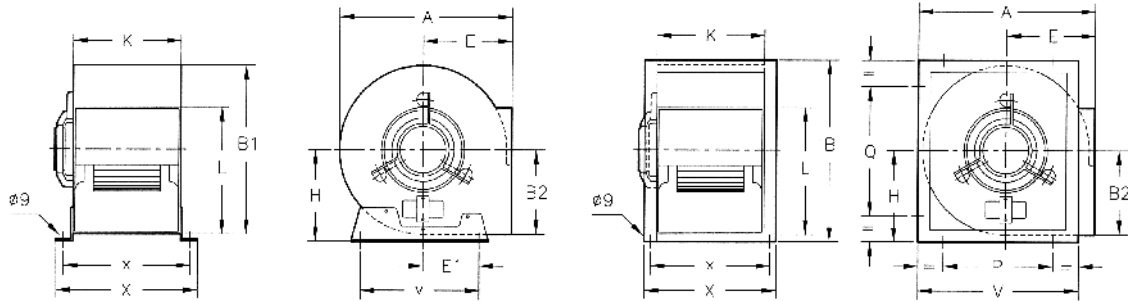
Technical characteristics

Model	Velocity (r/min)	Inches Equivalence	Max. admissible current (A)		Installed power (kW)	Max. airflow (m3/h)	Sound level pressure dB(A)	Approx. weight Kg.
			220/240V	380/415V				
CBD-1919-4M 1/5 3V	1220	7/7	1,50	-	0,15	1310	63	7,5
CBD-2525-4M 1/2 3V	1300	9/9	3,65	-	0,37	3000	68	14,8
CBD-2525-4M 3/4 3V	1250	9/9	4,15	-	0,55	3350	72	15,0
CBD-2525-6M 1/3 3V	825	9/9	2,45	-	0,25	2650	64	14,7
CBD-2828-4M 1/2 3V	1300	10/10	3,45	-	0,37	2600	69	15,8
CBD-2828-4M 3/4 3V	1250	10/10	4,20	-	0,55	3350	74	16,5
CBD-2828-6M 1/3 3V	850	10/10	2,60	-	0,25	3100	64	15,5
CBD-3333-6M 3/4 3V	850	12/12	4,60	-	0,55	5000	69	25,0
CBD-3333-6M 1 3V	925	12/12	6,00	-	0,75	5800	71	25,5

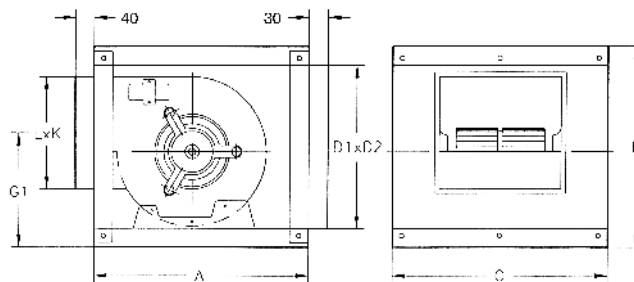


CBD CJBD

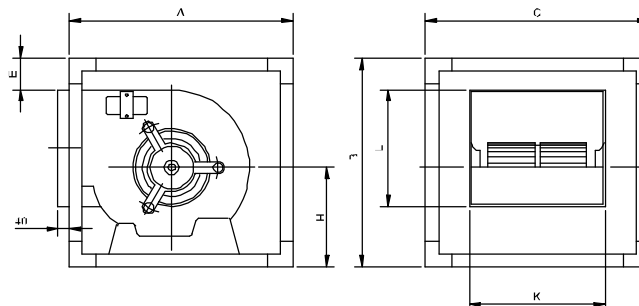
Dimensions mm



Model	A	B	B1	B2	E	E1	H	K	L	P	Q	v	X	x
CBD-1919	316	-	330	190	153	123	192	230	206	-	-	223	280	252
CBD-2525	380	-	392	219	181	127	224	300	260	-	-	274	350	322
CBD-2828	422	-	442	247	201	130	275	326	288	-	-	315	376	348
CBD-3333	492	-	525	292	230	161	325	387	341	-	-	390	437	409
CBD-3939	583	627	-	343	264	-	343	473	402	414	488	553	533	507



Model	Inches Equiv.	A	B	C	D1xD2	G1	LxK
CJBD-1919	7/7	450	460	500	366X406	278	216X238
CJBD-2525	9/9	500	522	550	428X456	314	268X305
CJBD-2828	10/10	550	575	600	481X506	353	296X330
CJBD-3333	12/12	650	650	700	556X606	401.5	349X392
CJBD-3939	15/15	800	755	800	661X706	476.5	409X479



Model	Inches Equiv.	A	B	C	E	L	K	H
	7/7	460	460	460	70	216	238	195
CJBD-2525/AL	9/9	520	520	520	70	268	305	230
	10/10	575	575	575	70	296	330	255
CJBD-3333/AL	12/12	650	650	650	70	346	385	290
CJBD-3939/AL	15/15	755	755	755	85	411	482	320

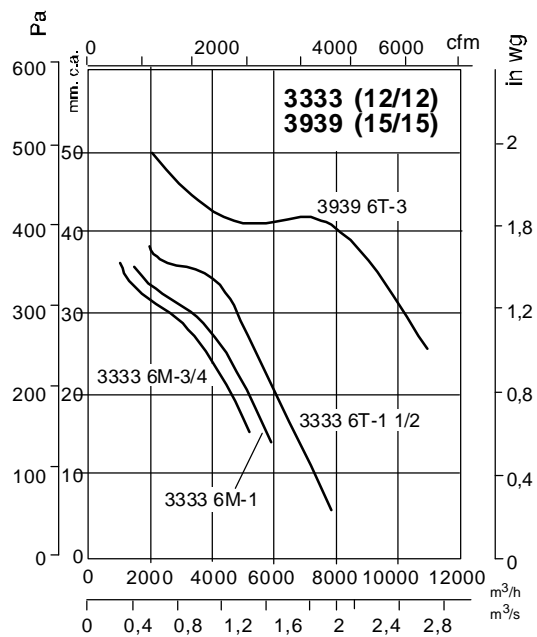
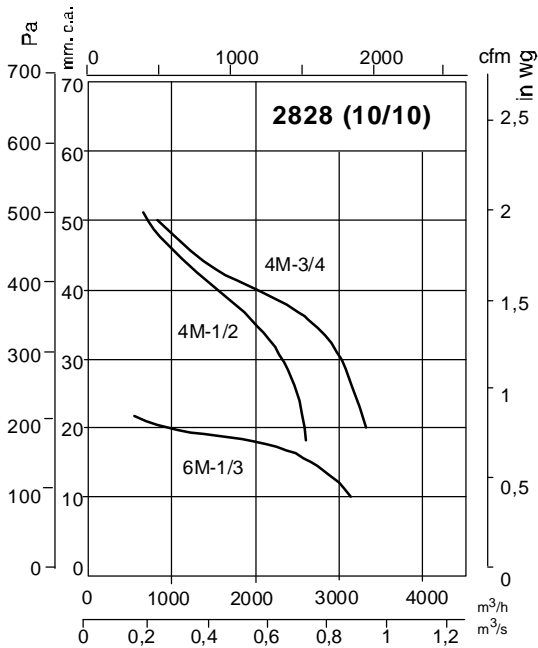
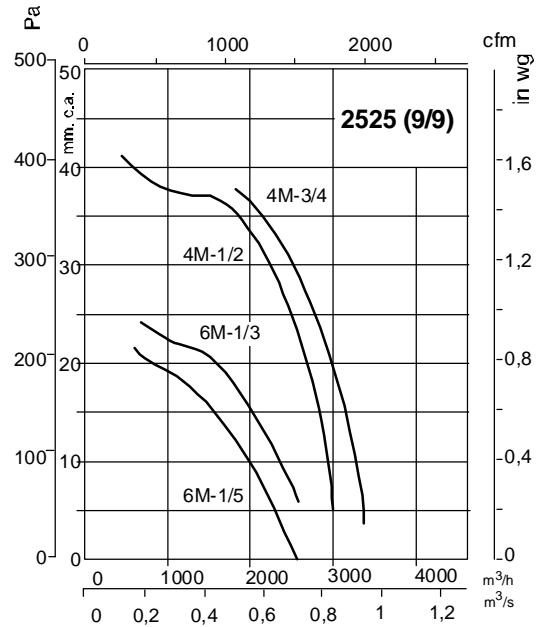
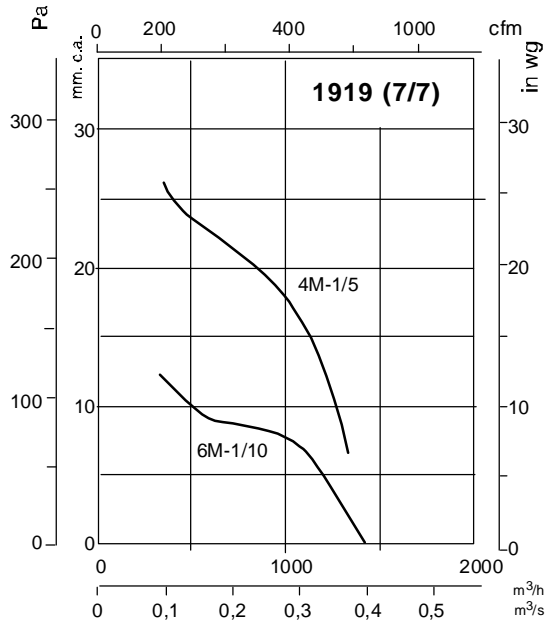




CBD CJBD

Characteristics Curves

Q = Airflow in m³/h and m³/s.
 Pe = Static pressure in mm.c.a. and Pa.

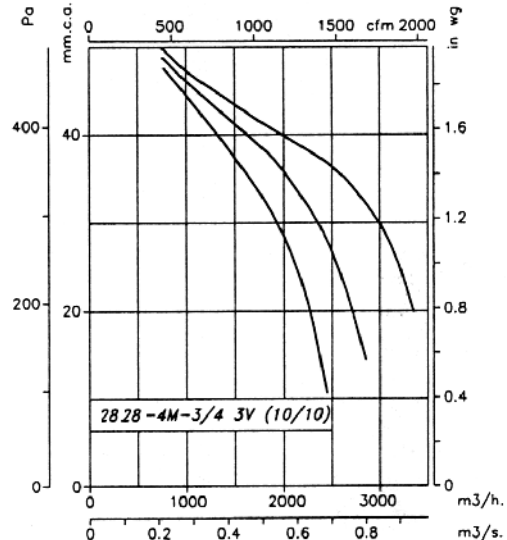
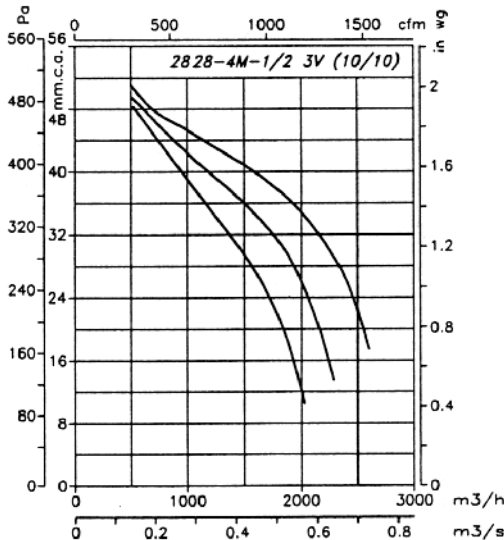
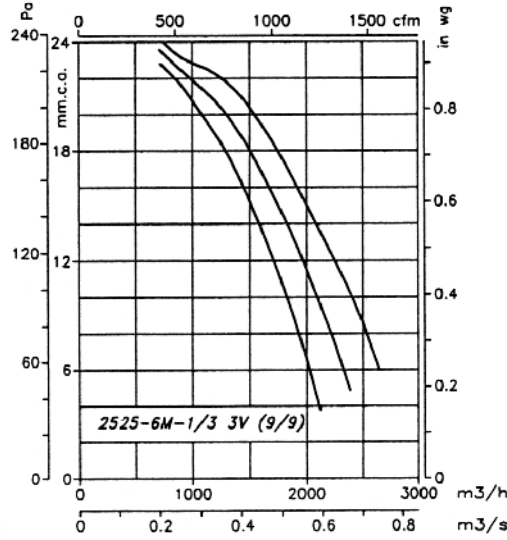
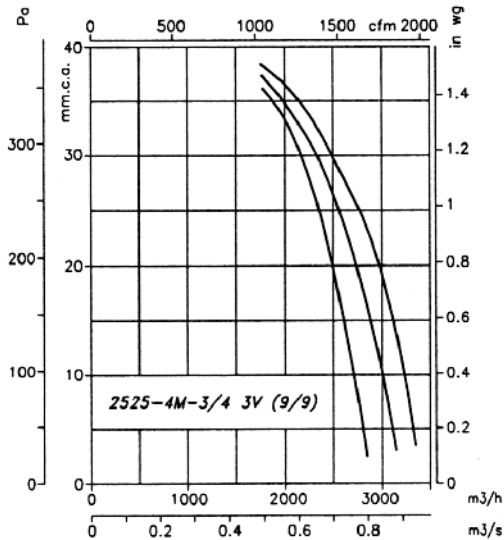
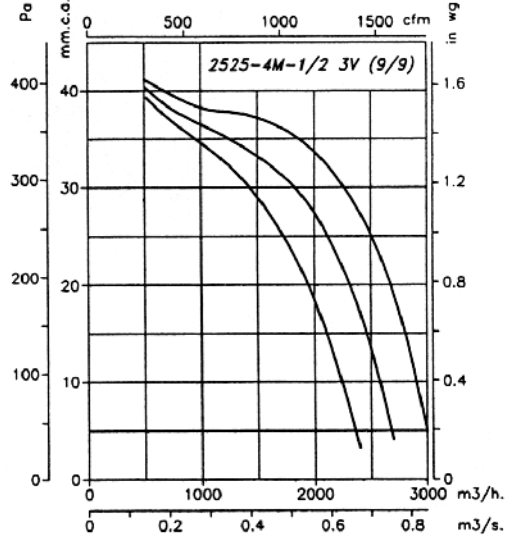
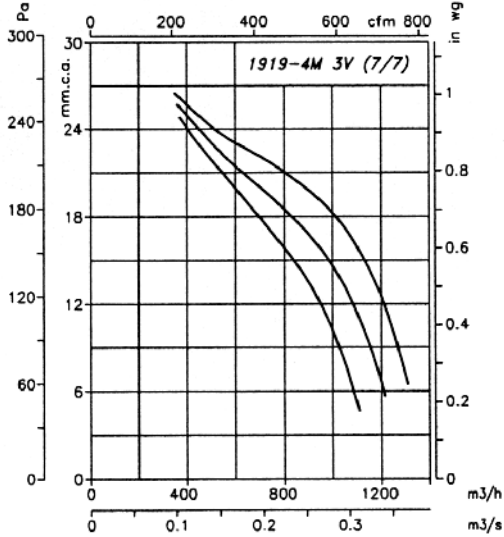




CBD CJBD

Characteristics Curves

Q = Airflow in m³/h and m³/s.
 Pe = Static pressure in mm.c.a. and Pa.

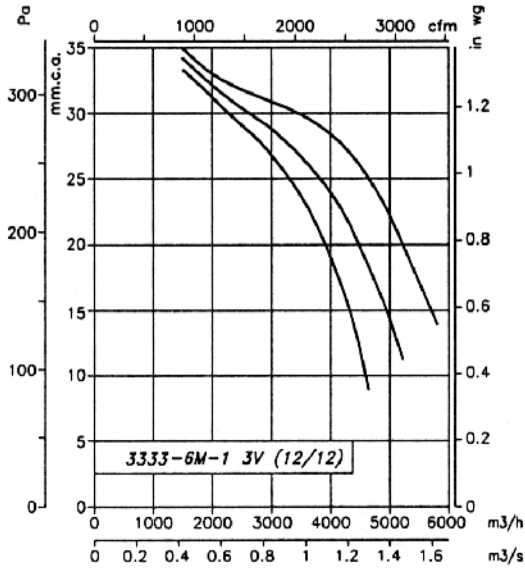
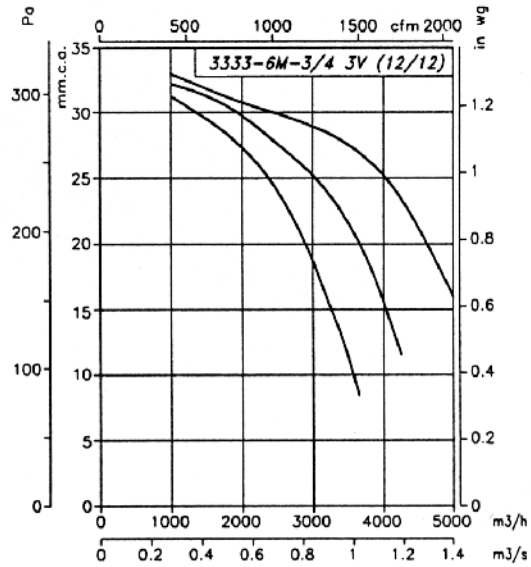
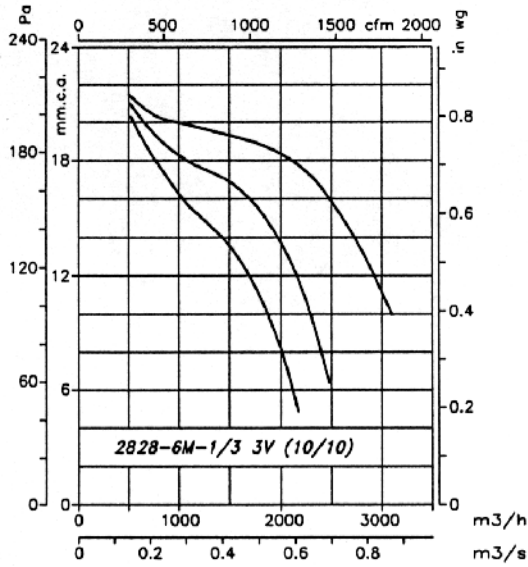




CBD CJBD

Characteristics Curves

Q = Airflow in m³/h and m³/s.
 Pe = Static pressure in mm.c.a. and Pa.



Accessories

See pages 248 onwards.



INT



PSB



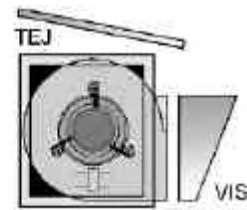
TEJ



VIS



PSB



VIS