



CJMD

400°C/2h ventilation units comprised of:

Construction characteristics

- Series with LGA1 certification in accordance with European standard EN12102-3.
- 400°C/2h ventilation units, specially designed and certified for operation within fire hazard areas, whose main feature is in line air flow between inlet and outlet.
- Made from galvanized sheet steel with thermal and acoustic insulation, provided with inspection cover.



Technical characteristics

Model	Velocity (r/min)	Max. admissible current (A)			Installed power (kW)	Max. airflow (m3/h)	Sound level pressure dB(A)	Approx. weight Kg.
		230V	400V	690V				
CJMD- 600-4T	1430	3,50	2,00		0,75	2750	58	72,0
CJMD- 665-4T	1430	4,80	2,80		1,10	3400	62	83,5
CJMD- 730-4T	1430	9,00	5,20		2,20	5000	66	104,0
CJMD- 730-6T	950	4,70	2,70		0,75	3600	52	96,5
CJMD- 800-4T	1440		8,40	4,80	4,00	6800	69	130,5
CJMD- 800-6T	950	6,70	3,90		1,50	4500	56	117,0
CJMD- 825-6T	935	9,50	5,50		2,20	7000	60	150,0
CJMD- 885-6T	935	9,50	5,50		2,20	7000	63	160,0
CJMD- 905-4T	1430	3,50	2,00		0,75	5800	63	133,5
CJMD- 920-6T	935	9,50	5,50		2,20	9000	69	212,0
CJMD- 960-4T	1430	4,80	2,80		1,10	8030	64	184,5
CJMD-1020-4T	1420	6,20	3,60		1,50	10500	66	196,0
CJMD-1020-6T	950	4,70	2,70		0,75	7410	56	195,0
CJMD-1160-6T	970		11,00	6,40	4,00	11000	71	307,0
CJMD-1225-4T	1430	11,80	6,80		3,00	15150	71	296,0
CJMD-1225-6T	955	5,90	3,40		1,10	10050	62	291,5
CJMD-1330-4T	1460		12,60	7,30	5,50	24450	72	415,0
CJMD-1330-6T	950	6,70	3,90		1,50	16100	63	387,5
CJMD-1550-4T	1460		22,00	12,70	11,00	34610	77	536,0
CJMD-1550-6T	970	13,50	7,80		3,00	22750	68	507,5



Acoustic characteristics

The values shown are calculated using free-field sound pressure levels in dB (A), at a distance equivalent to twice the fan span plus the impeller diameter, with a minimum of 1.5 m.

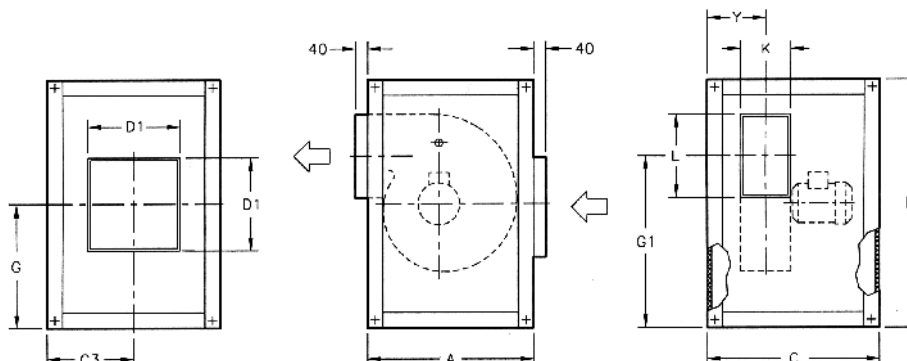
Sound power spectrum Lw(A) in dB(A) by frequency band in Hz.

Model	63	125	250	500	1000	2000	4000	8000	Model	63	125	250	500	1000	2000	4000	8000
600-4	33	43	54	61	65	62	60	53	960-4	51	64	70	75	72	75	70	56
665-4	37	47	58	65	69	66	64	57	1020-4	56	66	74	76	75	77	68	58
730-4	41	51	62	69	73	70	68	61	1020-6	45	57	64	69	65	61	54	46
730-6	27	37	48	55	59	56	54	47	1160-6	50	60	71	78	82	80	78	70
800-4	47	56	67	74	78	76	74	67	1225-4	61	70	83	79	82	83	77	63
800-6	34	43	54	61	65	63	61	54	1225-6	53	61	73	75	72	73	63	52
825-6	38	47	58	65	69	67	65	58	1330-4	72	77	83	85	83	80	73	65
885-6	41	50	61	68	72	70	68	61	1330-6	61	62	74	74	73	75	65	55
905-4	48	62	68	71	71	72	62	51	1550-4	75	76	85	88	90	91	87	74
920-6	48	58	69	76	80	78	76	68	1550-6	65	65	79	78	82	82	71	60



CJMD

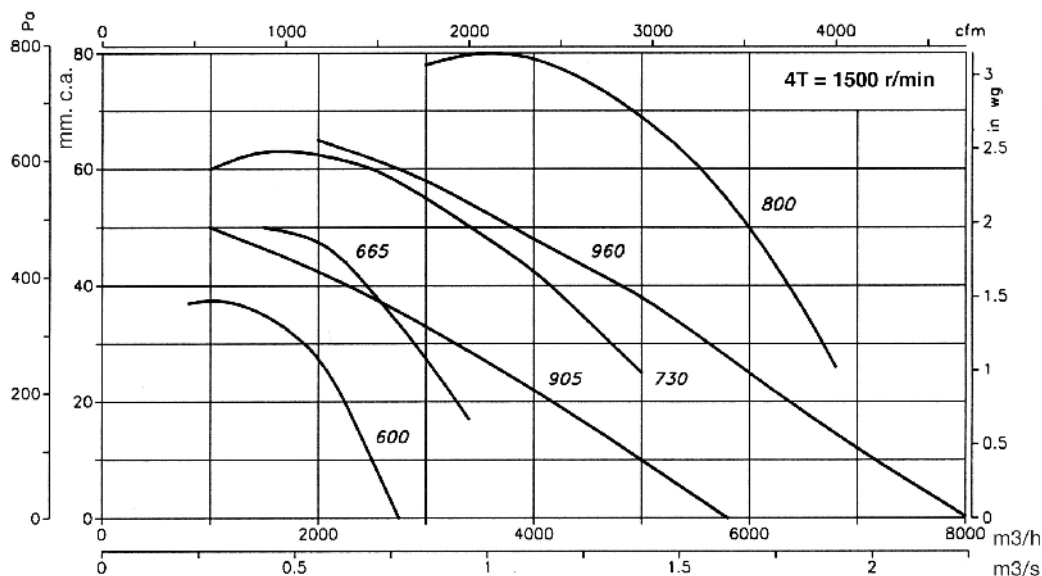
Dimensions mm



Model	A	B	C	C3	D1	G	G1	K	L	Y
CJMD-600	735	755	604	302	400	378	500	140	215	190
CJMD-665	790	810	678	339	400	405	540	165	250	215
CJMD-730	855	874	748	374	400	437	577	180	295	237
CJMD-800	941	961	798	399	500	481	653	200	320	264
CJMD-825	1039	1059	892	446	500	530	770	230	280	296
CJMD-885	1148	1168	938	469	500	585	849	250	320	330
CJMD-905	970	990	896	448	500	495	636	315	400	398
CJMD-920	1268	1287	954	477	600	644	945	284	360	372
CJMD-960	1060	1080	966	483	600	540	694	355	450	443
CJMD-1020	1150	1170	1038	519	800	585	756	400	500	490
CJMD-1160	1375	1395	1098	549	800	698	999	315	450	414
CJMD-1225	1204	1284	1258	629	800	642	836	450	560	545
CJMD-1330	1338	1418	1474	737	800	709	921	500	630	620
CJMD-1550	1495	1575	1648	824	1000	788	1032	560	710	675

Characteristics Curves

Q = Airflow in m³/h. and m³/s.
 Pe = Static pressure in mm.c.a. and Pa.

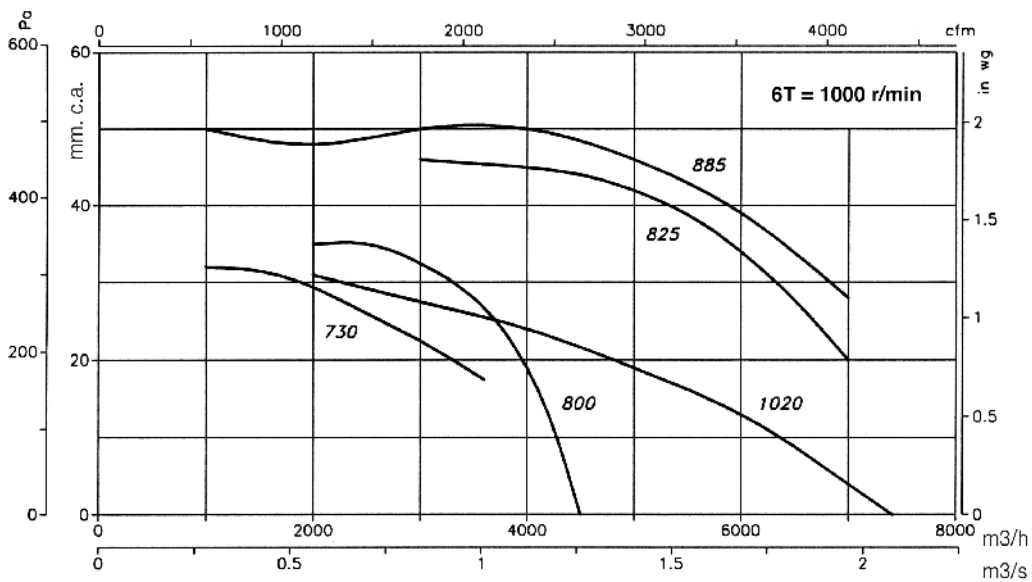
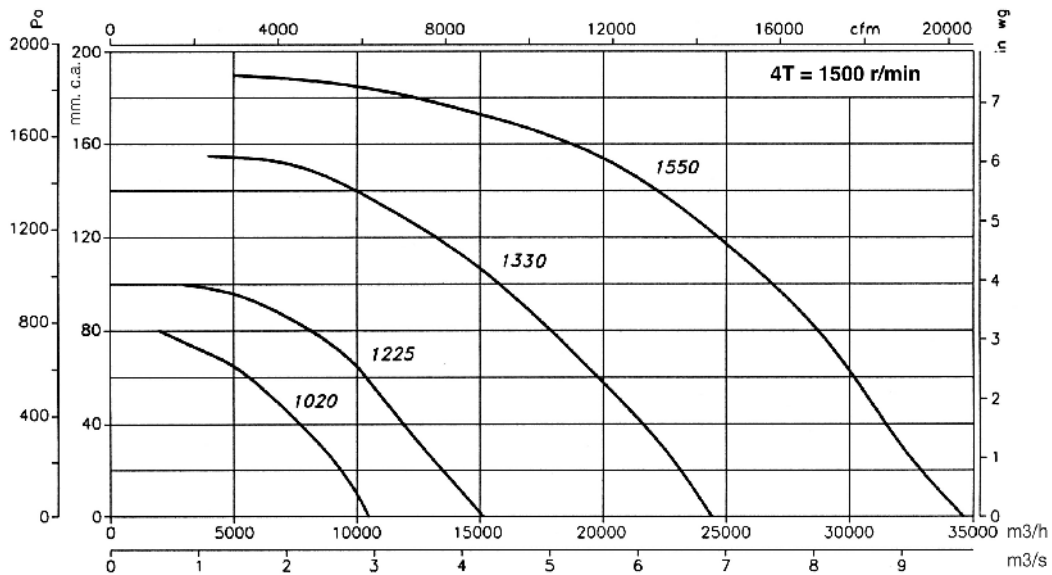




CJMD

Characteristics Curves

Q = Airflow in m³/h. and m³/s.
 Pe = Static pressure in mm.c.a. and Pa.





CJMD

Characteristics Curves

Q = Airflow in m³/h. and m³/s.
 Pe = Static pressure in mm.c.a. and Pa.

