



HPX

Long cased axial fans with external motor

Construction Characteristics

- Sheet steel housing. Semi-enveloping top (opens 180°).
- Cast aluminium impeller.
- Trapezoidal pulley and belt transmission.
- Sealed transmission unit with ball bearings and double retention system IP-66. Maximum airflow temperature 150°
- Standardized motor 230/400V, 50 Hz up to 5.5 HP, and 400/690V, 50 Hz for more powerful units. IP-55 protection. Class F insulation.
- Corrosion-proof finish in polyester resin, polymerised at 180°C, after degreasing, phosphating and passivation pre-treatment.
- On request supplied with:
 - Other protection systems, voltages and frequencies.
 - ATEX category 2 certification for explosive atmospheres, mark $\llcorner \text{Ex} \gg$ II 2 G/D EEx e or d.



150° C
IP-66
IP-55 MOTORS

Technical characteristics

Model	Velocity (r/min)	Max. admissible current (A)			Installed power (kW)	Max. airflow (m3/h)	Sound level pressure dB(A)	Approx. weight Kg.
		230V	400V	690V				
HPX-35-2T-0,75	2720	2,36	1,36		0,55	4750	77	22,0
HPX-35-4T-0,16	1420	0,76	0,44		0,12	2500	60	20,0
HPX-45-4T-0,33	1450	1,58	0,91		0,25	6300	69	32,0
HPX-45-4T-0,50	1700	1,94	1,12		0,37	6600	70	35,5
HPX-50-4T-0,75	1310	2,51	1,45		0,55	9000	70	32,5
HPX-50-4T-1	1500	3,22	1,86		0,75	10800	71	34,0
HPX-56-4T-0,75	1380	2,51	1,45		0,55	11300	72	35,5
HPX-56-4T-1	1500	3,22	1,86		0,75	12200	73	35,5
HPX-56-4T-1,5	1420	4,59	2,65		1,10	14500	75	39,0
HPX-63-4T-1,5	1300	4,59	2,65		1,10	16000	74	59,0
HPX-63-4T-2	1450	5,98	3,45		1,50	17500	78	63,0
HPX-71-4T-1,5	1200	4,59	2,65		1,10	20300	78	73,5
HPX-71-4T-2	1350	5,98	3,45		1,50	22500	79	76,8
HPX-71-4T-3	1450	8,49	4,90		2,20	24000	81	85,2
HPX-80-4T-3	1200	8,49	4,90		2,20	29000	83	95,0
HPX-80-4T-4	1350	11,26	6,50		3,00	32000	84	100,0
HPX-80-4T-5,5	1450	14,38	8,30		4,00	40500	84	106,0
HPX-90-4T-5,5	1280	14,38	8,30		4,00	44000	89	118,0
HPX-90-4T-7,5	1400		11,40	6,60	5,50	51000	91	132,0
HPX-100-4T-10	1450		15,10	8,70	7,50	63000	93	159,0
HPX-100-4T-15	1450		21,40	12,40	11,00	68000	94	181,0

Accoustic characteristics

The values shown are calculated using free-field sound pressure levels in dB (A), at a distance equivalent to twice the fan span plus the impeller diameter, with a minimum of 1.5 m.

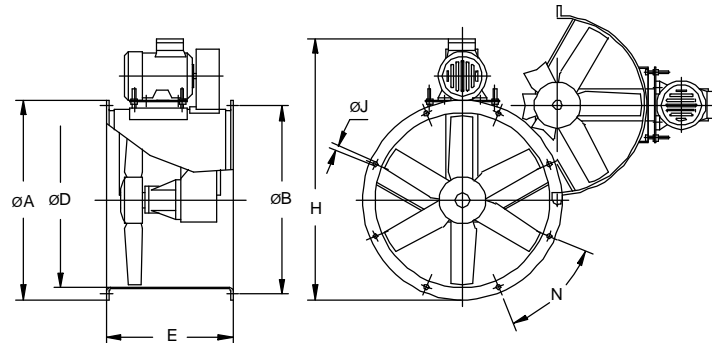
Sound power spectrum Lw(A) in dB(A) by frequency band in Hz.

Model	63	125	250	500	1000	2000	4000	8000	Model	63	125	250	500	1000	2000	4000	8000
35-2-0,75	48	63	82	81	82	81	76	67	71-4-1,5	55	75	83	88	90	87	80	69
35-4-0,16	31	46	65	64	65	64	59	50	71-4-2	56	76	84	89	91	88	81	70
45-4-0,33	40	55	74	73	74	73	68	59	71-4-3	65	76	86	92	93	88	77	73
45-4-0,50	41	56	75	74	75	74	69	60	80-4-3	60	80	88	93	95	92	85	74
50-4-0,75	44	58	77	77	78	76	72	63	80-4-4	61	81	89	94	96	93	86	75
50-4-1	45	59	78	78	79	77	73	64	80-4-5,5	68	79	89	95	96	91	80	76
56-4-0,75	47	67	75	80	82	79	72	61	90-4-5,5	67	88	95	100	103	99	92	81
56-4-1	48	68	76	81	83	80	73	62	90-4-7,5	69	90	97	102	105	101	94	83
56-4-1,5	57	68	78	84	85	80	69	65	100-4-10	73	93	100	106	108	105	98	87
63-4-1,5	51	71	79	84	86	83	76	65	100-4-15	74	94	101	107	109	106	99	88
63-4-2	62	73	83	89	90	85	74	70									



HPX

Dimensions mm

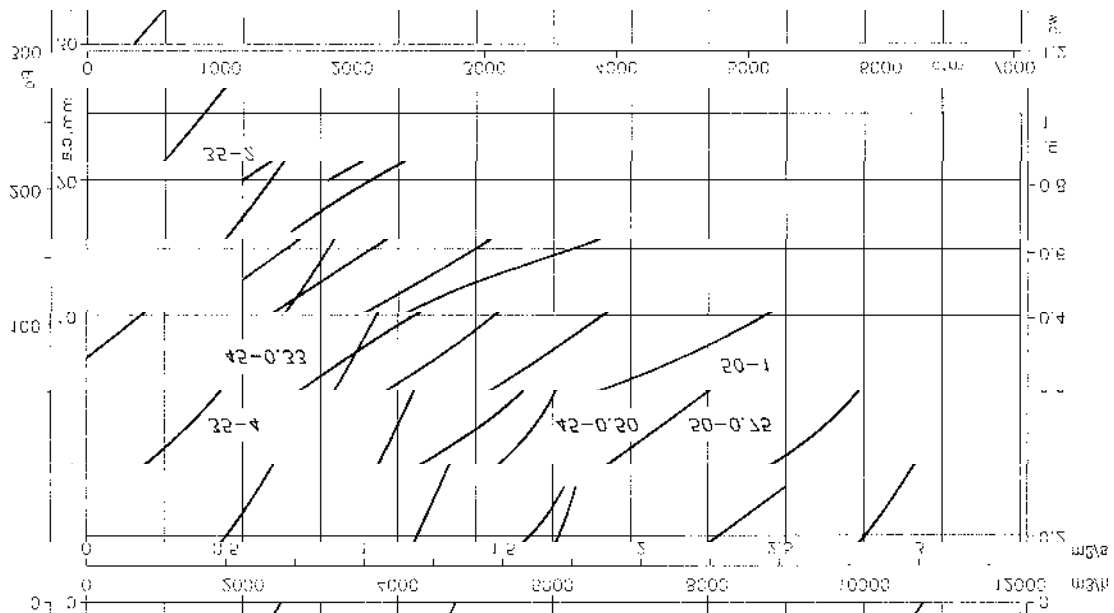


Model	ØA	ØB	ØD	E	H	ØJ	N
HPX-35-2T-0.75	425	395	355	380	606	10	8x45°
HPX-35-4T-0.16	425	395	355	380	609	10	8x45°
HPX-45-4T-0.33	540	500	460	420	740	12	8x45°
HPX-45-4T-0.50	540	500	460	420	728	12	8x45°
HPX-50-4T-0.75	600	560	512	420	803	12	12x30°
HPX-50-4T-1	600	560	512	420	803	12	12x30°
HPX-56-4T-0.75	660	620	560	450	848	12	12x30°
HPX-56-4T-1	660	620	560	450	848	12	12x30°
HPX-56-4T-1.5	660	620	560	450	870	12	12x30°
HPX-63-4T-1.5	730	690	640	500	950	12	12x30°
HPX-63-4T-2	730	690	640	500	950	12	12x30°
HPX-71-4T-1.5	810	770	710	550	1017	12	16x22°30'
HPX-71-4T-2	810	770	710	550	1017	12	16x22°30'
HPX-71-4T-3	810	770	710	550	1035	12	16x22°30'
HPX-80-4T-3	900	860	800	600	1173	12	16x22°30'
HPX-80-4T-4	900	860	800	600	1173	12	16x22°30'
HPX-80-4T-5.5	900	860	800	600	1200	12	16x22°30'
HPX-90-4T-5.5	1015	970	900	650	1320	15	16x22°30'
HPX-90-4T-7.5	1015	970	900	650	1320	15	16x22°30'
HPX-100-4T-10	1115	1070	1000	750	1483	15	16x22°30'
HPX-100-4T-15	1115	1070	1000	750	1513	15	16x22°30'

Characteristics Curves

Q = Airflow in m³/h. and m³/s.

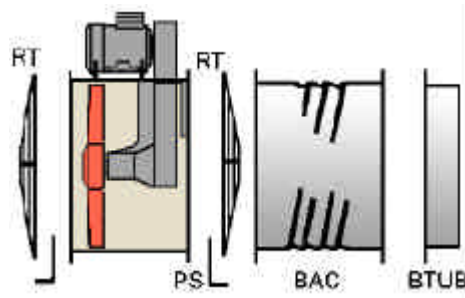
Pe = Static pressure in mm.c.a. and Pa.



HPX

Accessories

See pages 248 onwards.



Transmission group details:

